

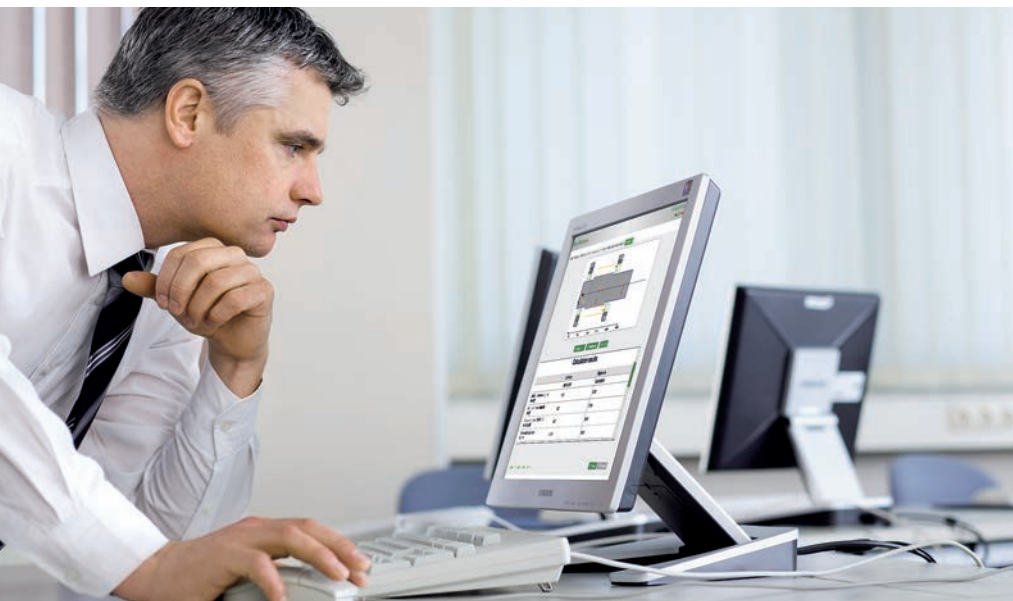
BEARINX-online Easy EMachine

Online calculation of electric motors and generators



SCHAEFFLER

High-performance calculation software ...



Along with developing and manufacturing top-quality precision parts, great service is an important tradition at Schaeffler. Rolling bearing design is one of the focal points of our design support. We want to give you a com-

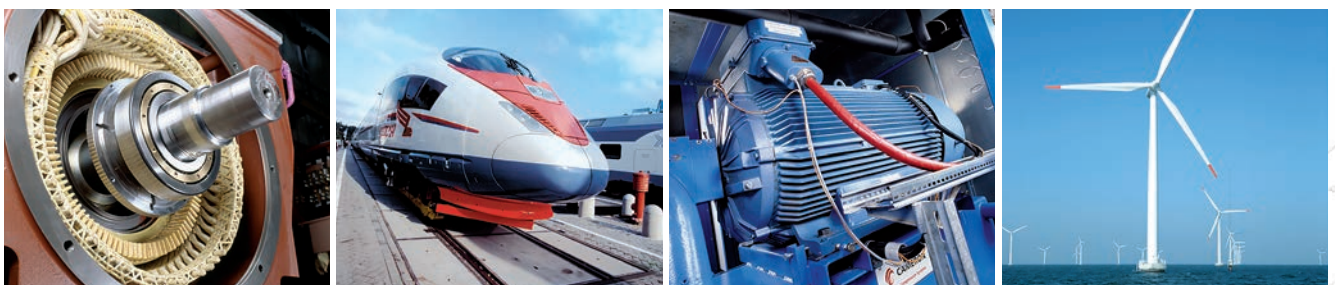
petitive edge by supplying you with perfectly designed products. We have already been using calculation programs successfully for 50 years to meet these requirements.

BEARINX – a leading program

BEARINX enables users to calculate, display, and document specific bearing loads in detail while taking operating and environmental conditions into consideration – even for complex machine systems. The contact pressure on every single rolling element is considered in the calculation.

The Easy series for online customers

The BEARINX-online “Easy EMachine” module allows electric motors and generators to be calculated based on their typical mechanical and electromagnetic field loads, and a suitable and reliable bearing support to be selected.

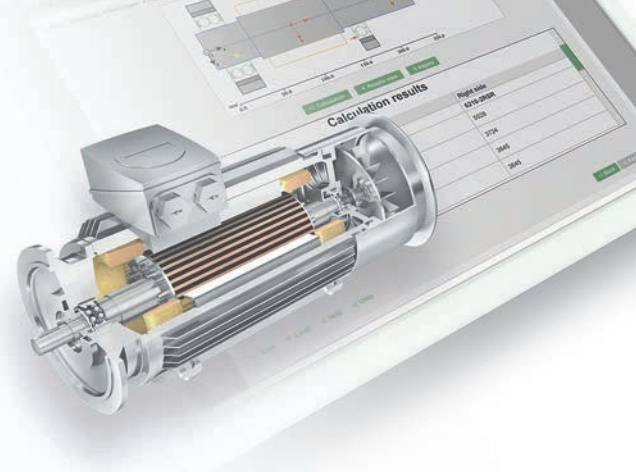


Typical applications for calculation with BEARINX-online Easy EMachine

Table Explanations:	
Designation	Designation
6010-2RSR left	304T
6210-2RSR right	40

1.4 Bearing behavior

Table Explanations:	PO_max
Bearing: 6010-2RSR left	304T
6210-2RSR right	40
SD_min	



...with self-explanatory menu navigation

User-friendly interface

You can use “Easy EMachine” to calculate electric motors and generators with horizontal, vertical, and freely-selected orientation. The weight of the shaft, laminated cores, and windings as well as the magnetic pull and other freely configurable loads can be selected. This means that belt pulleys, gears, and imbalances can be modeled at various speeds and in different load cases. Even aluminum housings with steel inserts as bearing seats can be taken into consideration.

The program’s user-friendly menu guides you through each step of the calculation process, and the data you have entered are shown as visualizations for checking.

Lastly, the bearings – the core of the machine – can be calculated in a wide range of variations, and the data for the INA and FAG rolling bearings are conveniently loaded from an integrated database.

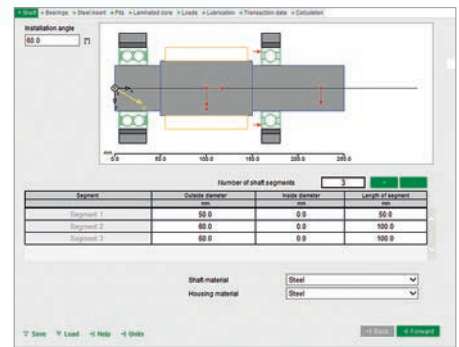
Data exchange

All input data can be saved locally. This enables any relevant changes to an existing design – such as load variants, adjustments to the size, or comparative calculations – to be made quickly without having to enter the data twice. In addition, users can send their saved files to the Schaeffler Engineering Service so that results can be verified and examined in more detail using the full version of BEARINX.

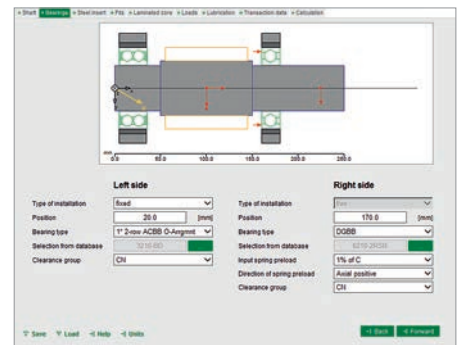
Calculation and documentation

Calculations are carried out on Schaeffler’s powerful calculation servers. The adjusted reference life and the minimum static load safety factor are among the data displayed for all bearing arrangements. In addition, the detailed results and all of the input data are documented in a PDF file. Specifically, the documentation also provides recommendations regarding lubrication, lubricating grease operating life, and relubrication.

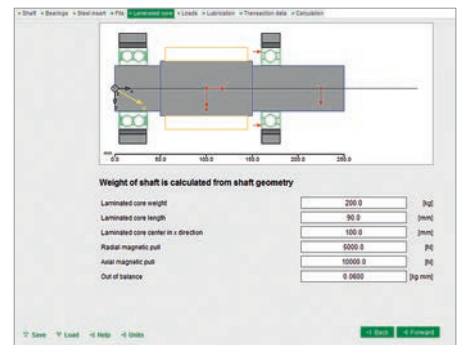
A commercial inquiry can be sent at the end of the process.



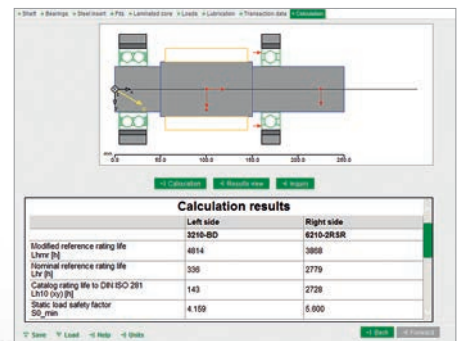
Shaft geometry data entry



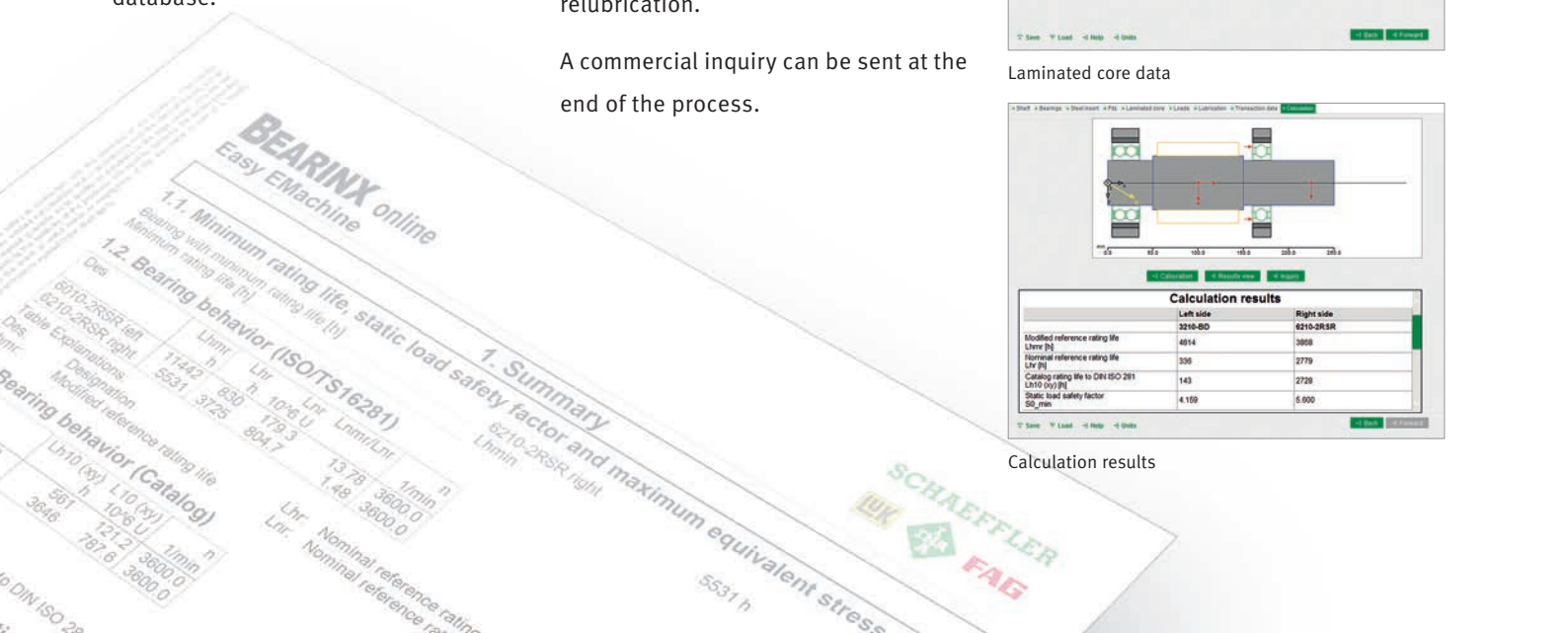
Bearing selection



Laminated core data



Calculation results



Registration: BEARINX-online Easy EMachine



The BEARINX-online Easy EMachine calculation program is available online only and can be used free of charge. After initial registration, which takes very little time, you can start your calculation immediately.

<http://bearinx-online-easy-emachine.schaeffler.com>

Schaeffler Technologies AG & Co. KG

91072 Herzogenaurach

Germany

E-mail bearinx-online@schaeffler.com

Phone +49 9132 82-7575

Fax +49 9132 82-3344

Internet www.schaeffler.de/en

Every care has been taken to ensure the correctness of the information contained in this publication but no liability can be accepted for any errors or omissions. We reserve the right to make technical changes.

© Schaeffler Technologies AG & Co. KG

Issued: 2015, April

This publication or parts thereof may not be reproduced without our permission.